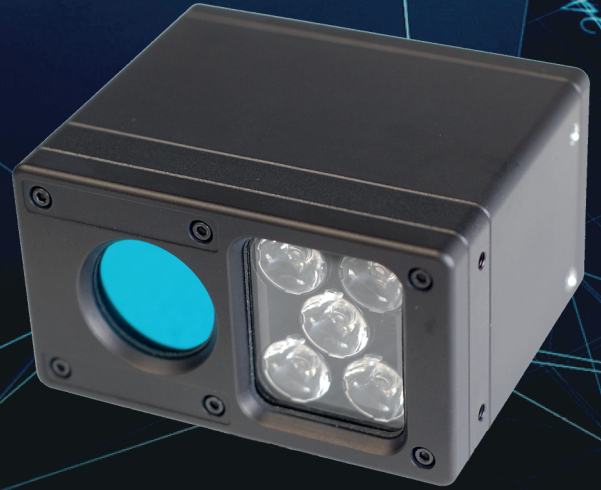


Rapier 35P/362

Integrated 12x Zoom Cameras with High Power LED Illumination

The Rapier 35P/362 range takes our compact ANPR cameras to new heights of performance in fixed and mobile applications. Rapier 35P/362 incorporates high grade zoom camera technology, improved infrared pulsed LED design and multiprocessor control circuitry to provide an ANPR/ALPR camera solutions for professional use in both fixed and mobile situations.



RAPIER



Perfect Field of View

12x optical zoom with presets



Efficient Operation

Nominally 12VDC, 10W



Fantastic Recognition Range

3 to 30+ metres EU plate capture



Compact Enclosure (Dual)

138 x 57 x 91 mm (W x H x D)



High Intensity Illumination

White Light, 740nm and 850nm



Compact Enclosure (Mono)

99 x 57 x 91 mm (W x H x D) (Mono)



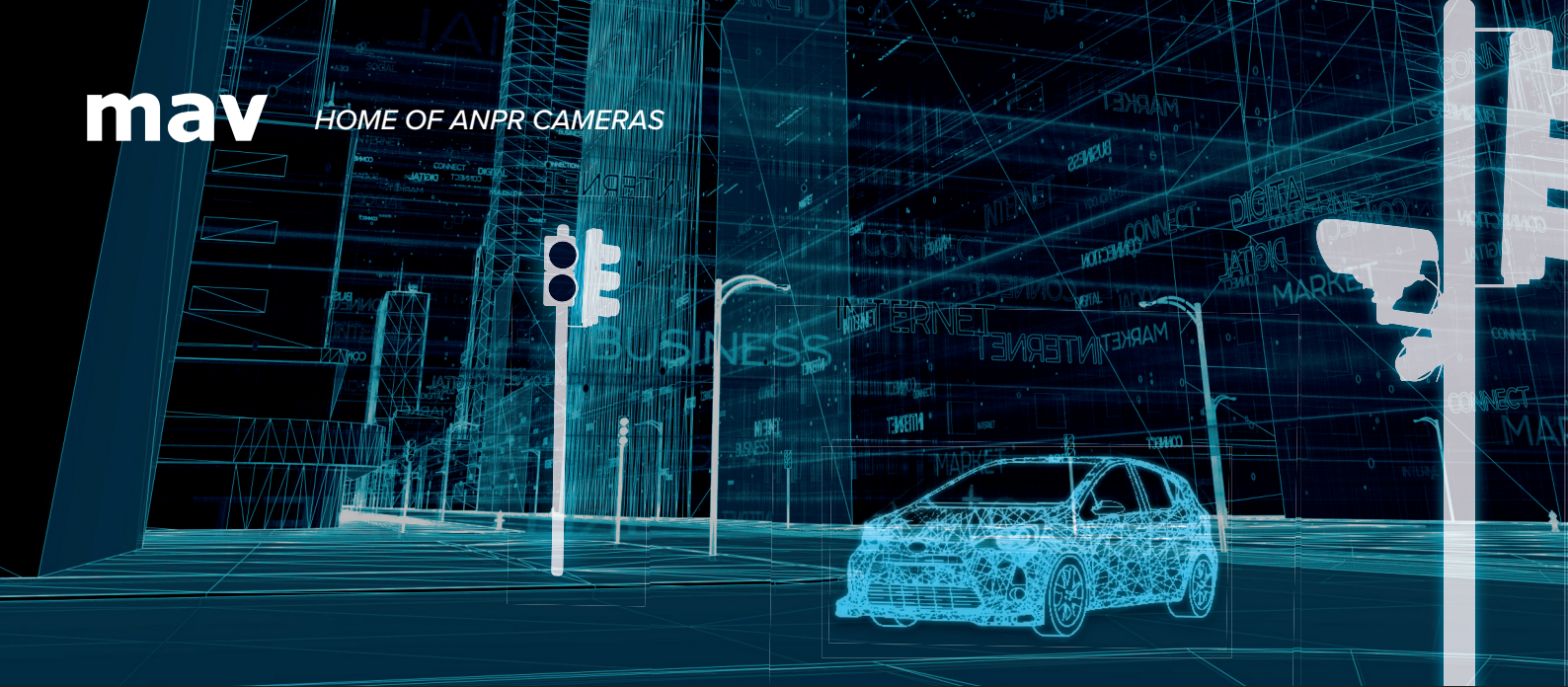
Simple Setup Facilities

Free apps and RS232 AVML protocol



Environmental

IP68 dry air purged hermetic seal



World Class ANPR Performance

Our Rapier 35P/362 range of cameras all include an ANPR camera and integrated IR with or without an inbuilt overview camera alongside. Rapier 35P/362 cameras have 12x zoom capabilities as standard to give exactly the field of view required, not limited by fixed focal length lenses. The zoom and focus capabilities can be easily preset and moved dynamically.

Rapier 35P/362 Mono and Dual models support license plate recognition up to 30+ metres. For increased distance and illumination, the Rapier 55 models offer greater IR intensity to match challenging lighting and plate conditions. The Rapier range also includes standalone lighting units to provide additional illumination that is fully synchronised.

Rapier 35P/362 models offer multi-level frame-by-frame variations that can provide high quality images from differing plate characteristics. High grade image quality from Rapier 35 delivers even better recognition capability to ANPR systems.

Rapier 35P/362 inherits the high reliability, quality of build and long life for which Rapier cameras have become world renowned in the professional market.



MAV Rapier 35P/362 Specification

Compact ANPR zoom cameras with high output IR illumination in a compact IP68.

Specifications

	Rapier 30/362 Dual	Rapier 30/362 Mono
Recognition Range	Typically 3 to 30+ metres using 850nm illumination on EU retro reflective plates	Typically 3 to 30+ metres using 850nm illumination on EU retro reflective plates
Illumination	Pulsed array of multichip LEDs (White Light, 740, 850, 870 or 940nm) with lenses	Pulsed array of multichip LEDs (White Light, 740, 850, 870 or) with lenses
Optics	12x optical zoom, lens equivalent f=3.7 to 44.4mm, HFoV 53.6° (Wide) to 4.6° (Tele), F1.6 to F28.	12x optical zoom, lens equivalent f=3.7 to 44.4mm, HFoV 53.6° (Wide) to 4.6° (Tele), F1.6 to F28.
IR Filtering	ANPR images optically filtered using high transmissivity custom designed bandpass filters	ANPR images optically filtered using high transmissivity custom designed bandpass filters.
Images	752(H) x 582(V) effective picture elements, 680 TVL, Day/Night IR Cut, Colour/B&W	752(H) x 582(V) effective picture elements, 680 TVL, Day/Night IR Cut, Colour/B&W
Image Format	PAL video 1V p-p 75Ω CVBS, colour burst suppressed for ANPR	PAL video 1V p-p 75Ω CVBS, colour burst suppressed for ANPR
Light Sensitivity	ANPR camera 0.0 Lux with illumination Colour Overview 0.95 Lux Colour / 0.02 Lux B/W	ANPR camera 0.0 Lux with illumination
Image Manipulation	Image Invert, BLC, HLC, AGC, Noise Reduction	Image Invert, BLC, HLC, AGC, Noise Reduction
Camera Control	Auto / Manual settings of all features via single RS232 interface using AVML protocol	Auto / Manual settings of all features via single RS232 interface using AVML protocol
Camera Connections	Binder 16 way compatible with PIPS 362	Binder 16 way compatible with PIPS 362
Illumination Control	Multilevel illumination, power and pulse width control (auto and manual options)	Multilevel illumination, power and pulse width control (auto and manual options)
Shutter Speed	1/10,000th to 1/50th second and sequential shutter options	1/10,000th to 1/50th second and sequential shutter options
Presets	1 configurable presets including power on settings under full protocol control	1 configurable presets including power on settings under full protocol control
Operating Voltage	10-15VDC protected	10-15VDC protected
Power Consumption	Nominally 10W	Nominally 10W
Physical (WxHxD)	138 x 57 x 91 mm - excluding brackets/sunshield (compatible with Rapier 30)	99 x 57 x 91 mm - excluding brackets/sunshield (compatible with Rapier 30)
Weight	1.0kg	0.725Kg
Enclosure	IP68 hermetically sealed in black hard anodised aluminium	IP68 hermetically sealed in black hard anodised aluminium
Temperature/Humidity	-20°C to 50°C ambient operating / 0% to 100% RH	-20°C to 50°C ambient operating / 0% to 100% RH

Service

Customer Service	Friendly, helpful service for product ordering and repair returns
Technical Support	Comprehensive pre and post-sale technical support for full life of the product
Warranty	12 month warranty, extended warranties and factory repair/replacement options available
Long Term Supply	Complete support for the life of the product
Quality Management	MAV Systems operates a quality management system complying with ISO9001:2000