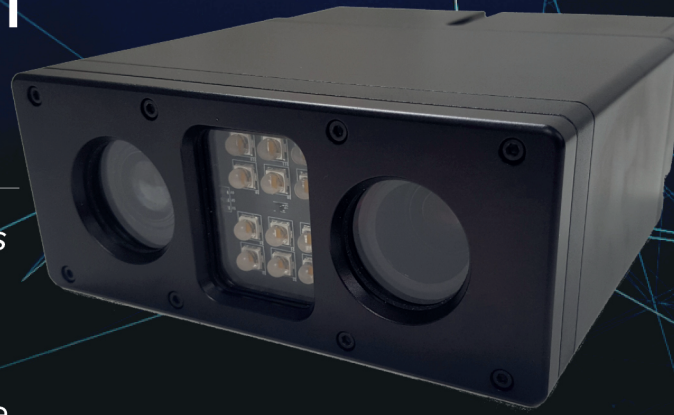


Rapier 30HD Dual

High Grade Mobile HD ANPR Camera
and colour overview

The Rapier 30HD Dual camera provides HD images of superb quality in a mobile or fixed environment. The high definition GigE camera module is synchronized to a infrared (IR) pulsed LEDs that offer superior license plate recognition to match the increased capture width that megapixel HD offers.



RAPIER



Multi Lane

High resolution images providing excellent recognition



Rugged

High grade metal enclosure with simple installation options



Overview

Colour GigE HD 1.3 MP overview camera



Sealed

Hermetically sealed to IP68 for demanding physical environments



Performance

Best-in-class with up to fifty HD images per second



Control

Full control and feedback of camera and IR settings



Illumination

Pulsed illumination with control capabilities over network



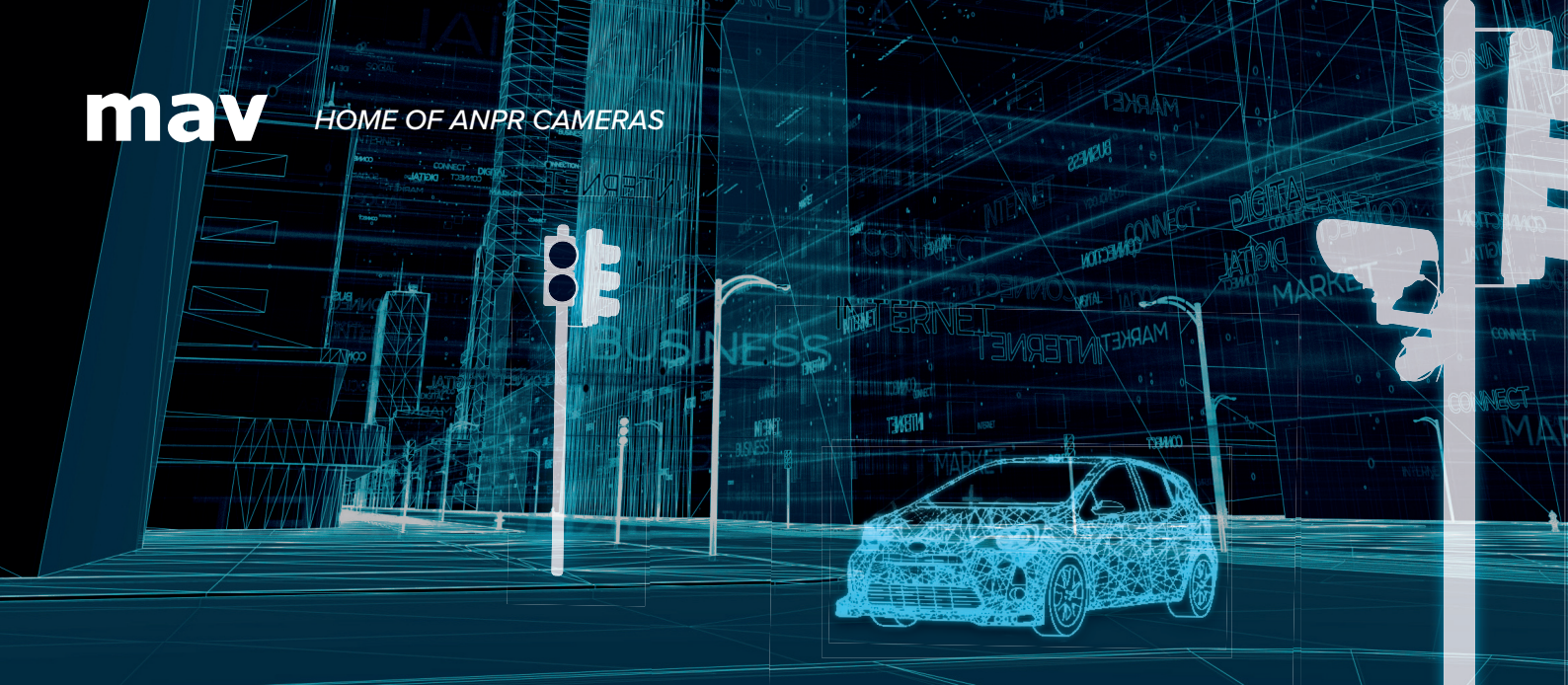
ANPR Megapixel HD

GigE Ethernet connectivity for uncompressed images



Power

DC power for efficient deployment or vehicle installation



Compact HD Performance

The Rapier 30HD Dual has a 1.3MP fixed lens ANPR camera and 1.3MP colour overview camera. These models provide digital ANPR images without any compression allowing every pixel to count when reading challenging plates in lane widths of up to 7-8m, depending on region.

An individual GigE connection is provided for both the ANPR and overview cameras. Separate DC power and control.

The Rapier 30HD Dual is offered with a range of high quality fixed lenses for a choice of ANPR target distances with preset focus that covers the full capture range. The overview camera can be fitted with the same fixed lens or different aspect depending on the application.

Rapier 30HD Dual uses a custom designed bandpass filter and an improved bank of infrared illuminators for full width, multilane operation.

Rapier 30HD Dual has been designed for ease of install on vehicles including use within lightbars and is fully hermetically sealed to IP68.



MAV Rapier 30HD Dual Specification

Rapier 30HD Dual has fixed lens 1.3MP GigE ANPR and 1.3MP Colour overview cameras with a choice of ANPR lenses to meet your exact ANPR requirements.

Specifications

ANPR Recognition Range	Typical recognition range 8m to 20m. Choice of lens 8mm, 12mm, 16mm or 25mm.
ANPR Field of View	Horizontal 7m (approx. 2 lanes of traffic) at high speed with very high accuracy
Illumination	12 high power pulsed micro-lens LED arrays to match choice of ANPR optical lens. 850nm or optionally White Light, 740nm or 940nm
Illumination features	Infill pulse feature for low frame rates
ANPR image	1/1.8" sensor with 1280(H) x 1024(V) providing raw 1.3 Megapixel images
ANPR image manipulation	Camera based Area of Interest (AoI) facilities and scaling possible via SDK/application
ANPR Frame rate	1.3MP: Up to 50 images per second (ips) set by SDK/application.
ANPR Exposure Time	Global exposure 50µs - 20ms / Equivalent shutter speed 1/20,000th to 1/50th second
Illumination period/power	Illumination pulse width, offset and power variable under software control including tracking of exposure
Overview Camera	1280(H) x 1024(V) with lower resolution encoding options available via API
Overview Frame Rate	50fps (API selectable between 1fps and 50fps)
Overview Shutter	Global exposure 50µs - 20ms / Equivalent shutter speed 1/20,000th to 1/50th second
Cabling	Supplied with 3 x fitted 0.5m GigE and composite cables – extendable within limits of 803.2at type 2 standards
Camera Control Protocols	GigE SDK (ANPR), HTTP API (Overview) and AVML (IR) via RS232
Power Requirement	10.5 – 15VDC
Power Consumption	Nominally 14W
Physical (WxHxD)	138 x 57 x 148 mm (WxHxD) - excluding brackets/sunshield
Enclosure	IP68 hermetically sealed hard anodised aluminium in black with rugged mount options
Weight	1.5kg (3.3lb)
Temperature / Humidity	-20°C to 50°C operating with relative humidity 0%RH to 100%RH (hermetically sealed)

Options and Accessories

Cable harness sets	Connection from the Rapier to the ANPR equipment is available through 2 inline Binder connectors 0.5M long - extra adapters 720/8 to CAT5e cable, and 720/5 to powered over the DC
Brackets / Sunshields	A range of metal cradles, brackets and sunshields are available. Modified and bespoke metalwork can be designed and supplied to meet specific demands.

Service

Customer Service	Friendly, helpful service for product ordering and repair returns
Technical Support	Comprehensive pre and post-sale technical support for full life of the product
Warranty	12 month warranty, extended warranties and factory repair/replacement options available
Long Term Supply	Complete support for the life of the product
Training	Comprehensive product training programmes for customers