

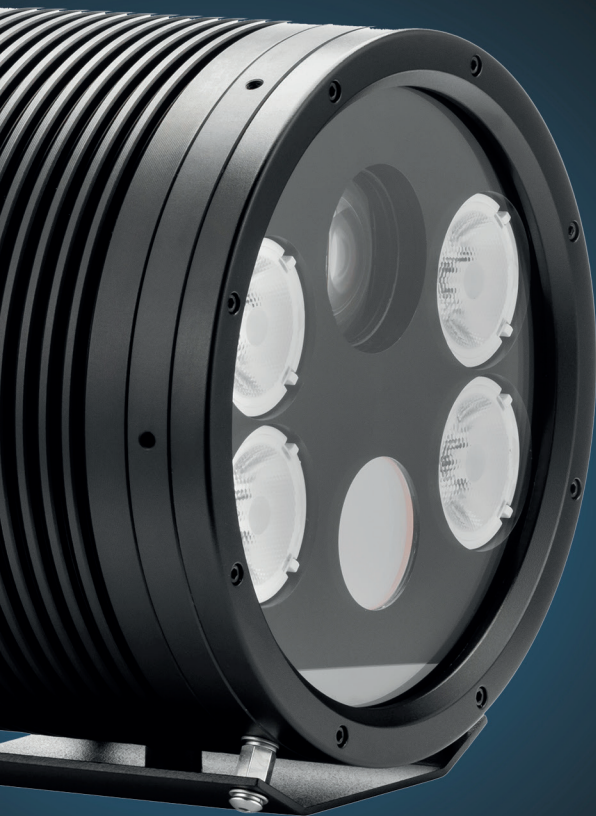
IQ:350XP

**4G All in one High Speed, 12 x Zoom
1080p Intelligent Camera**

Incorporating HD 1080p image quality, motorized zoom, high speed ANPR recognition and maxIRange™ pulsed IR lighting in one efficient unit, the IQX GPS range sets new standards for intelligent ANPR cameras.



IQ:350XP



1080p HD Video

High resolution HD1080p images providing excellent recognition



4G Router

3G/4G Router with access to external sim slot



Integrated ANPR Engine

To provide high accuracy reads with meta data



Secondary IMX processor

For custom applications and I/O



JSON Web Services

Simple integration into applications using open interface



Weatherproof

Fully hermetically sealed to IP68



Zoom Cameras

Fully controllable truEZoom™ for the perfect field of view



Offline Data Management

Store and forward for offline data transfer (Optional)

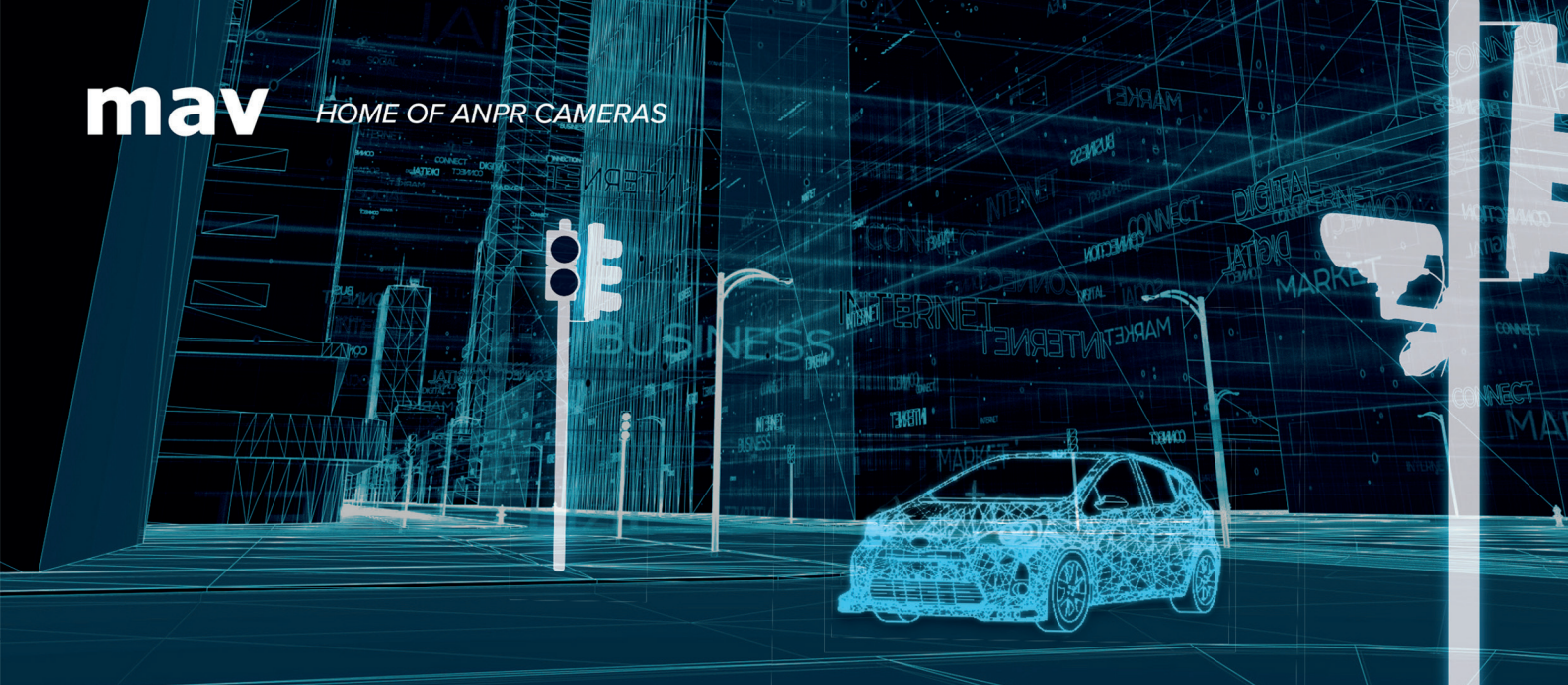


Powerful Pulsed IR

maxIRange™ for true day/night number plate recognition

mav

HOME OF ANPR CAMERAS



All-in-one Intelligent Camera

The IQX GPS provides recognition for up to 12m lane width for detection of plates and is simple to set up with truEZoom™ for perfect field of view at distances from 15m up to 50m. Setup is performed using the camera's API or from any browser using the IQX range's web setup with live video feed.

The high definition global shutter ANPR camera module is synchronized to upgraded infrared (IR) pulsed LEDs to offer superior license plate recognition to match the increased capture width that 1080p resolution offers.

The IQ:350XP incorporates high grade processing within the unit to give industry leading ANPR accuracy. All this data is available to the server using open standard JSON web services.

Integrated 4G router with a second IMX processor ideal for custom applications.

The Internal data management of the IQX range enables store and forward whilst offline, ensuring no data is lost. This feature provides options of storage for over 1,000,000 reads and offers flexible filtering for rapid data transfer. The IQX GPS is hermetically sealed to IP68.



IQ:350XP - Specification

The MAV IQ:350XR is available with a 7-84mm zoom.

Specifications

Recognition Range	Capture of up to 12m of traffic lanes from 15m to 50m based on 850nm IR on EU retro-reflective plates
Sensor ANPR/OV	Two cameras: 1/1.8" Progressive Scan Global Shutter CMOS. Available resolution 1920x1080
Motorised Zoom	12 x Optical motorized zoom (7.00mm-84mm), focus and automatic iris control, Lens equivalent 51.1° to 5.0° Horizontal FoV.
Shutter / Iris	1/50 to 1/10,000 / F1.4 (wide) to F4.2 (tele)
IR illumination	4 pulsed LED arrays with lenses (850nm standard. White light or 740nm optional)
Low Light	ANPR: 0.0 Lux with IR illumination OV: 0.1/0.006 Lux (Colour/B&W (no IR Cut) selectable)OV: 0.1/0.006 Lux (Colour/B&W (no IR Cut) selectable)
HP GPS	Internal high accuracy GPS
Optical Filters	IR: Bandpass matched to LEDs OV: Day/Night IR Cut Filter
Time Accuracy	Resolution \leq 40ms
Camera Control	Integrated web server provides full camera and illuminator setup pages and live preview from any connected browser (no plug-ins required)

ANPR Engine Functionality

ANPR Processor	Dual Core DSP with co-processor and two channel internal parallel video input
ANPR Software / Presets	ANPR license and configuration upload via web based configuration pages for simple remote management
ANPR Engine Protocol	JSON web services provide full access to overview and plate patch images and metadata as push or pull messages for easy integration into applications (O/S independent) and via web pages
ANPR Metadata	Multiple plate tracking with IDs, full availability of plate movement/size data through field of view
ANPR Features	Image cropping options for Overview image, advanced de-skew and yaw correction, character spacing validation, country of origin matching

Communication and App Processor

4G router options	FDD / TDD 4G. DC-HSPA+/HSPA+/HSPA/WCDMA/UMTS 3G, IPsec, PPTP/L2TP client, GRE/IPIP, IP packet/Domain/MAC lter, NAT, DMZBuilt-in watch dog, Multi-link detection Ultra security, VPN: PPTP, L2TP, GPE, IPsec, High Reliability: Hardware link self-recovery
IMX	Hardware security engine with TRNG, Crypto Engine (AES/TDES/SHA/RSA) and Tamper Detection, Memory 8G Flash, 256MB SDRAM and 16-128GB SD Card

Physical Specifications

Operating Voltage	PoE+ (803.2at type 2) or 10-15VDC suitable for battery power
Network Connections	RJ45 10/100 Base-T physical
Accessory Connection	I/O, External IR sync Overview, Power B/12pin, B/3pin, B/5pin
GPS	Series 400 Buc SMA to attach an external antenna
Power Consumption	Nominally 28 Watts
Size (WxHxD)	163 x 163 x 172mm (cylindrical) excluding connectors, mount and sunshield
Weight	3.6kg excluding mount and sunshield
Enclosure	IP68 hermetically sealed. Hard anodized aluminium with mount options
Temperature / Humidity	-20° to 55°C ambient (Operating) / 0% - 100% RH (sealed)

Customer Service

Customer Service	Friendly, helpful service for product ordering and repair returns
Technical Support	Comprehensive pre and post-sale technical support for full life of the product
Warranty	12 month warranty, extended warranties and factory repair/replacement programmes available
Long Term Supply	Complete support for the life of the product
Quality Management	MAV operate a quality management system complying with ISO 9001:2000
Training	Comprehensive product training programmes for customers